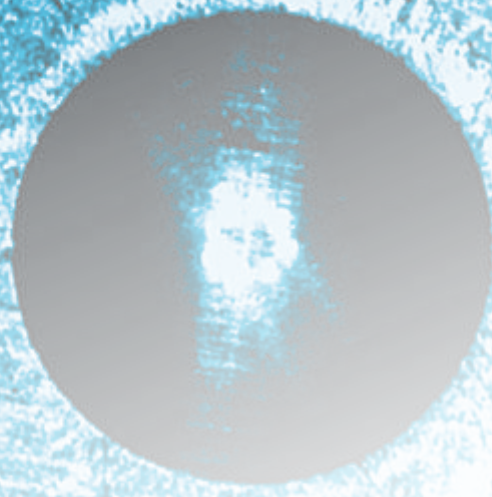


ESTING-(Fie Pvt Ltd)-[TRIAL 18] - [Results]

RESULT

Certificate No. :TRIAL 18

SELECTED INDENTATION



Tested for
Fie Pvt Ltd
Plot No. 68
YADRAV-4

Identif
SP01

Batch
First

Load
3000 kgf

Limits
Maximum
Minimum

260 HB
230 HB

Mean Diameter
3.98 mm

...w.r.t. Limits Good



Over **60** years of
consistent excellence

Bridge Type Computerized Brinell Hardness Testing Machine

Model : Brinmax-3000-B



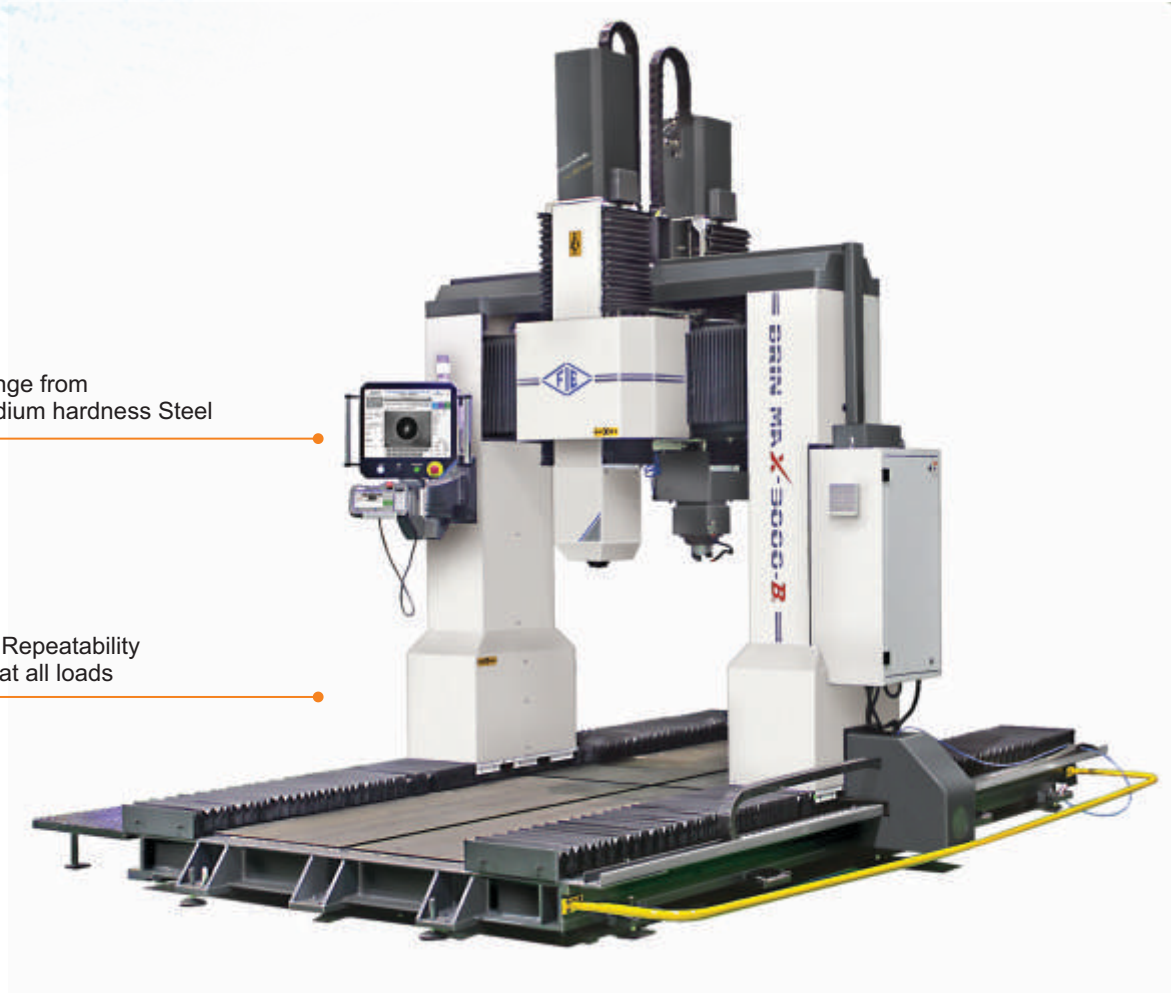
Wide Testing Range from
Soft metal to medium hardness Steel



High Accuracy & Repeatability
of Measurement at all loads



Servo Loading &
Unloading cycle



Latest GUI Software Features :

- User friendly Software.
- Handled touchscreen HMI Pendant.
- Online indentation setting & focusing on front touch screen display.
- Advance image processing : algorithms implemented for precise calculation of hardness numbers with various options to cover all ranges of specimen.
- Batch files processing : Option for data storage & reports generation.
- Wide options in calibration mode-calibration/verification.
- Extensibility for future advanced image processing analysis requirements.
- USB printer port for printer interface with result & graph print out.
- Facility to measure in manual, semi & automatic mode.
- Facility to export result/data in PDF format.

Introduction :

FIE Make **BRIN MAX-3000 - B** machine is robust machine which is suitable for use with very large components such as those found in the foundry and oil Industry. It is a simple and accurate machine to produce and automatically measures the indentation to give Brinell hardness number.

This machine is suitable for measuring the hardness of parts up to 4 ton weight with wide testing range from soft to hard with accurate results as per standard.

This testing machine strictly confirms to IS 1500-2, BS: 10003-2 and ASTM-E-10.

Construction :

BRIN MAX-3000 - B machine is fully automatic machine with powered X, Y and Z axis. The Z-axis powered by servo motor. There is fabricated base and fabricated frame for easy fitment of jobs. All X, Y and Z axis are powered by servo motor. X & Z axis are driven by ball screws & LM guide ways and Y axis is driven by Rack & Pinion arrangement.

Job to be checked is placed on fabricated table and brought in contact with indenter. Load/Unload/Read operations are done automatically. The machine consists of a Brinell test head for applying the test forces of up to 30000N (3000kgf).

Analysis system offers fully automatic Brinell measurements in scales from 250 kgf to 3000 kgf for 5mm and 10 mm dia indentation. The image is digitalized using USB camera fitted on the optical device and is captured by the front touch screen HMI.

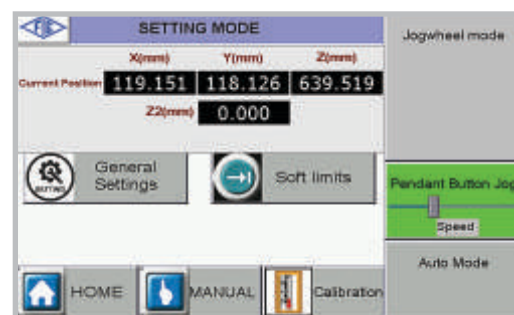
The diameters of the indentation are directly measured by software to give Brinell hardness number. The machine is equipped with latest touch screen HMI on support arm system.

Technical Specifications :

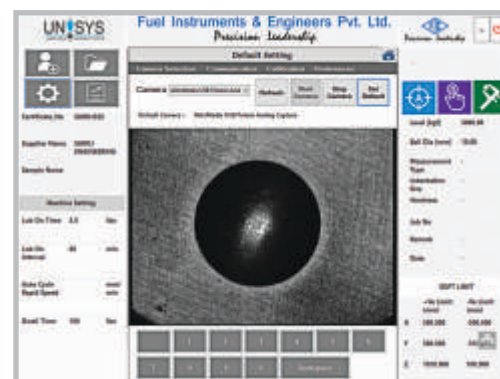
Base	mm	1300 x 4000 x 900 (X-Y-Z axis)
Travel	mm	700 x 2500 x 500 (X-Y-Z axis)
Maximum Test Height	mm	500 (500 adjustable)
Power Input	V (Volt)	440 V AC, 3 ph.
Machine Dimensions	(L x W x H) mm	5500 x 3500 x 4000
Weight (Approx.)	kg.	5500
Magnification of Objectives	X	4X
Measuring Range	mm	1-6



Pendant Home Screen



Pendant Setting Screen



Screen Shot of Software

Standard Accessories :

Ball holder 5mm	1 No.
Ball holder 10mm	1 No.
Test Block HBW-5/750	1 No.
Test Block HBW-10/3000	1 No.
Allen Spanner	1 Set
Electric Cords	1 Set
USB device for Video	1 No.
Instruction Manual	1 Book



Manufactured By :

Fuel Instruments & Engineers Pvt. Ltd.

Plot No. 68 & 89, Parvati Co-op Industrial Estate, YADRAV-416 145 (Ichalkaranji),
Tal : Shirol, Dist : Kolhapur, Maharashtra State, INDIA.

Tel : +91 2322 252137, Cell : +91 98223 94981, E-mail : mrk@fietest.com

Web : www.fiegroup.in, www.fietest.com, www.fuelinstrument.com